

ambia

UPHOLSTERY FABRICS





## **Uniroyal Global Limited**

Ambla is manufactured in the UK to the highest quality standards and available directly from our UK manufacturing facility in full rolls or from our extensive UK and Worldwide distributor network in cut lengths or full rolls.

Ambla is the perfect choice for contract upholstery in a number of markets and applications, including healthcare, hospitals, education, hotels, restaurants, leisure projects and marine, bus and off-highway machines.

Bespoke materials using custom colours and prints for large projects or corporate branding are also available on request.

**Available Worldwide. Ambla – ask for it by name.**

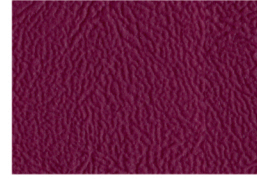
# Richmond in Colour



Navy



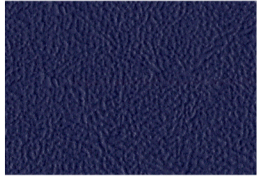
Lavender



Damson



Flake



Blueberry



Leaf Green



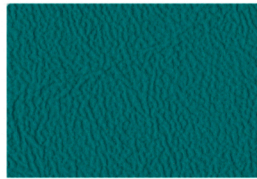
Blossom



Bark



Cornflower



Orchid



Bubblegum



Chocolate



Royal Blue



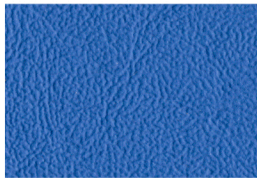
Lagoon



Mango



Truffle



Bluebell



Lime



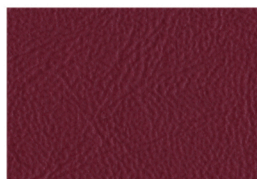
Sunflower



Mushroom



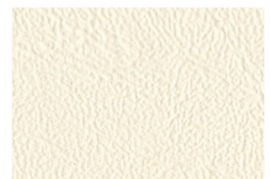
Topaz



Rosehip



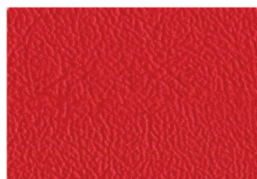
Peach



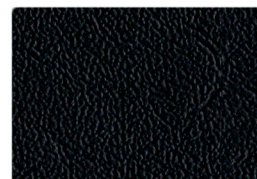
Snow White



Lapis



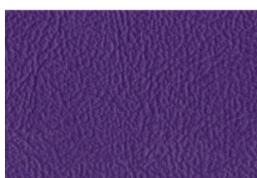
Poppy



Black



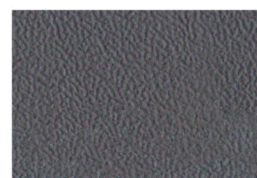
Apple



Blackcurrent



Fire Cracker



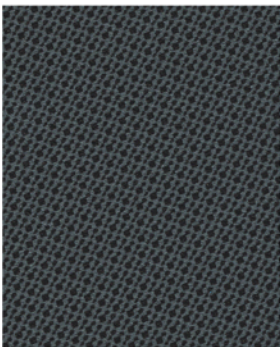
Feather



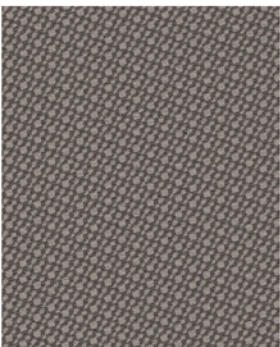
Rosebud



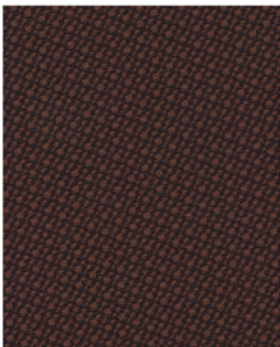
# Juno



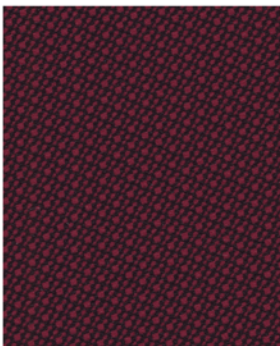
Juno Black



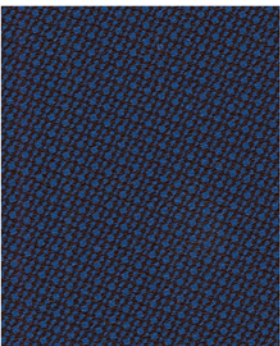
Juno Flake



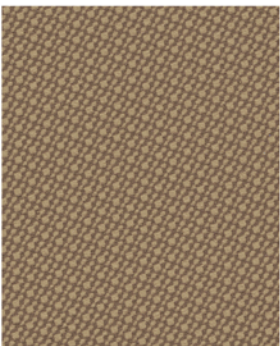
Juno Chocolate



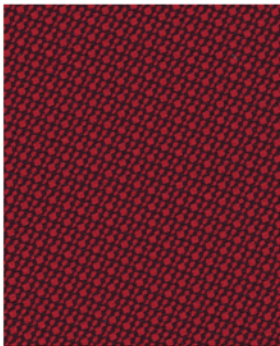
Juno Rosehip



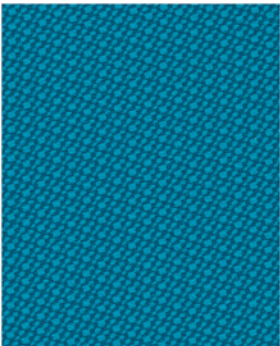
Juno Cornflower



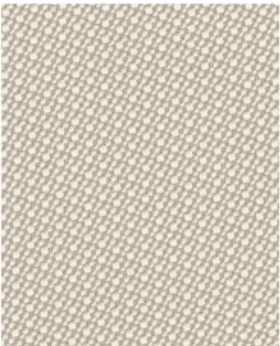
Juno Truffle



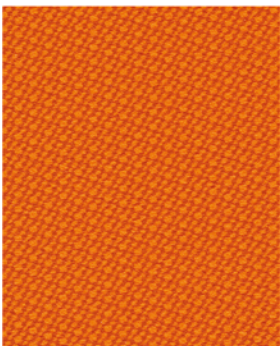
Juno Poppy



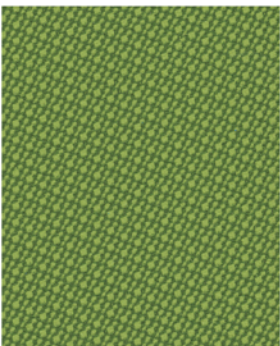
Juno Lapis



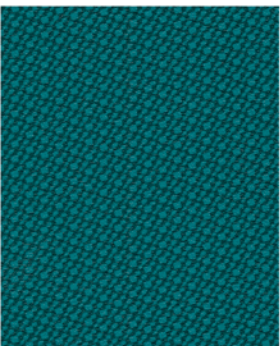
Juno Snow White



Juno Mango



Juno Lime



Juno Orchid



# The Classics

## Exmoor- Leather Touch



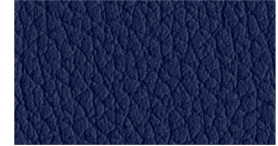
Holnicote



Burrow



Exton



Allerford



Nutcombe



Ashwick



Hurlstone



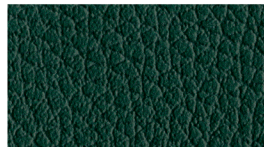
Upton



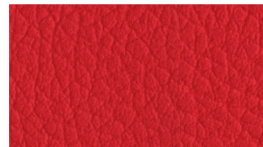
Cheriton



Withiel



Hawkridge

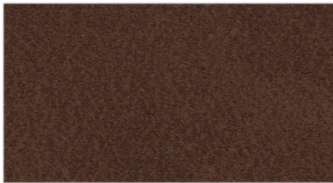


Horner

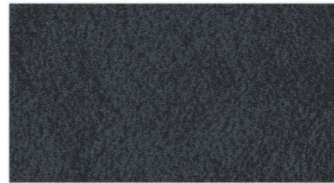


Bratton

## Munro



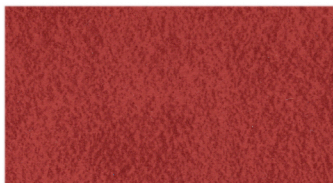
Saddle



Tolmount



Keen



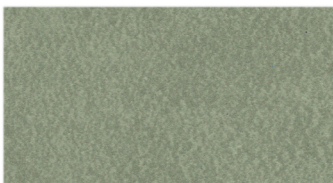
Conival



Hope



Cairnwell



Charn

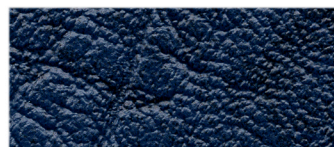


Lui

## Tinto



Nubian Black



Memphis Blue

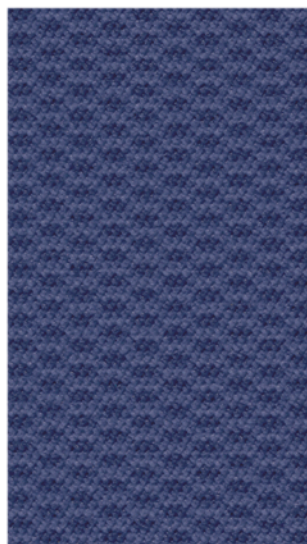


Wadi Beige

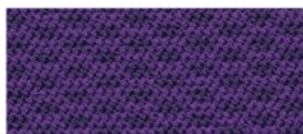


# The Classics

## York Weave



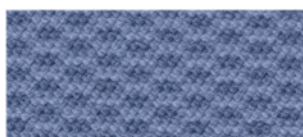
Minster



Grape



Toft Green



Deangate



Foss Bank



Aldwark



Priory

## Wild Heather



Ninian



Nevis



Lomond



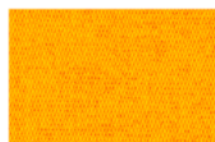
Lewis



Spey



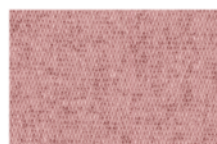
Skye



Clyde



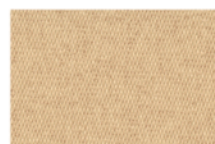
Harris



Kerry



Oban



Bute



Brechin

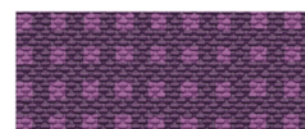
## Berkshire



Caversham



Boxford



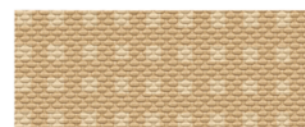
Burghfield



Newbury



Purley



Fawley





**Ambla is manufactured in the UK to the highest quality standards and available directly from our UK manufacturing facility in full rolls or from our extensive UK and Worldwide distributor network in cut lengths or full rolls.**

**Ambla is the perfect choice for contract upholstery in a number of markets and applications, including healthcare, hospitals, education, hotels, restaurants, leisure projects and marine, bus and off-highway machines.**

**Bespoke materials using custom colours and prints for large projects or corporate branding are also available on request.**

### **Ambla Protects**

Ambla contains active ingredients that protect against the growth and spread of mould and mildew. This is not a surface treatment and therefore Ambla retains its effectiveness even after regular cleaning. Ambla resists bacterial & mould growth even after 5 years of heavy commercial use, cleaned every day (Tested to ISO 846) and is ideal for environments where hygiene and cleanliness are important.

### **Ambla Performs**

Ambla is manufactured to meet demanding criteria such as high wear resistance, needed in public areas and commercial / contract upholstery applications. Ambla is the perfect choice for seating in public spaces, for example airports, food outlets and large stadia or theatres.

**Available Worldwide. Ambla – ask for it by name.**

### **TECHNICAL INFORMATION**

#### **Quality**

Tested in accordance with BS 5790 Part 1 1996 & ISO7617-1:2001.  
Quality systems approved to ISO 9001, IATF 16949 and MED  
Module D and Environmental system approved to ISO 14001.

#### **Abrasion**

Martindale abrasion in excess of 300,000 rubs.  
Tested in accordance with BS EN ISO 12947 1, 2  
In excess of 1 million rubs when using reverse abrasion method.

### **FLAME RETARDANCY**

#### **Ambla is flame retardant**

BS5852: 2006 Ignition Source 0 and 1 when tested in combination with CMHR35 foam.  
BS5852: 2006: Clause 11 Ignition Source 5 (Crib 5) when tested in combination with CMHR35 foam.

ISO 8191-1 1987 smouldering cigarette  
ISO 8191-2 1988 match flame

BS7176: 2007 for Medium Hazard applications.  
BS EN 1021-1: 2006: Part 1 smouldering cigarette  
BS EN 1021-2: 2006: Part 2 match flame  
BS 5852 2006: Clause 11 Ignition Source 5

IMO Resolution MSC 307 (88) (2010 FTP Code): Annex 1 Part 8

FAR/JAR Part 25: App. F Part 1 (Vertical Test) / EASA CS.25.853  
(Amendment 21)

The colours in this brochure have been digitally printed and may differ slightly to the actual production colours. Free samples are available on request.

### **CLEANING & MAINTENANCE**

Ambla is resistant to most mild acids, alkalis, beverages and general household products that can stain. Clean with soapy water and a damp cloth and rinse well with clean water. Do not use solvents, bleaches, abrasives, synthetic detergents, wax polishes or aerosol sprays (chlorine-related agents at levels of 1-10000 parts per million should pose no problems as long as the material does not endure long soakings at the higher concentration).

Disinfectants can be used in dilution as specified by their manufacturers. These include Haz-Tabs and other disinfectants commonly used in hospital infection control programmes. Rinse well with clean water. Ambla surfaces are NaDCC compatible.

### **WIDTH**

1370mm nominal

### **ROLL LENGTHS**

25 metres

### **AVAILABILITY**

Ambla is available worldwide, for details or samples please contact us on:

Tel: +44 (0) 1282 842511  
[amblasales@uniroyalglobal.com](mailto:amblasales@uniroyalglobal.com)  
[www.ambla.com](http://www.ambla.com)





**Uniroyal Global Limited**

West Craven Business Park  
West Craven Drive  
Earby  
Lancashire, BB18 6JZ

**Tel:** +44 (0)1282 842511  
[amblasales@uniroyalglobal.com](mailto:amblasales@uniroyalglobal.com)

[www.ambla.com](http://www.ambla.com)



**Hackebeil GmbH Objektbezugstoffe**

Am Sportplatz 17 | 96117 Memmelsdorf-Merkendorf  
Tel. +49 (0) 9542 77 428 24 | Fax +49 (0) 9542 77 428 26  
[info@hackebeil.de](mailto:info@hackebeil.de) | [www.hackebeil.de](http://www.hackebeil.de)

